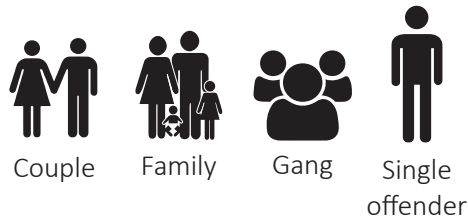


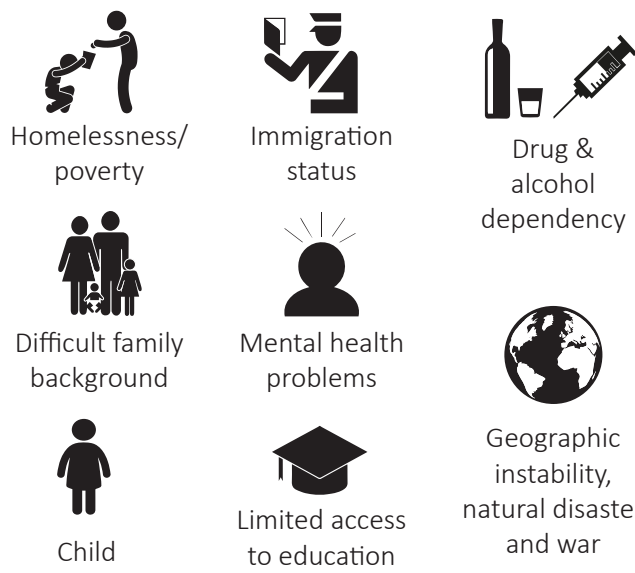
# THERE IS NO ONE TYPE OF MODERN SLAVERY

## ORGANISATION & ROLES

Victims and offenders often share the same nationality

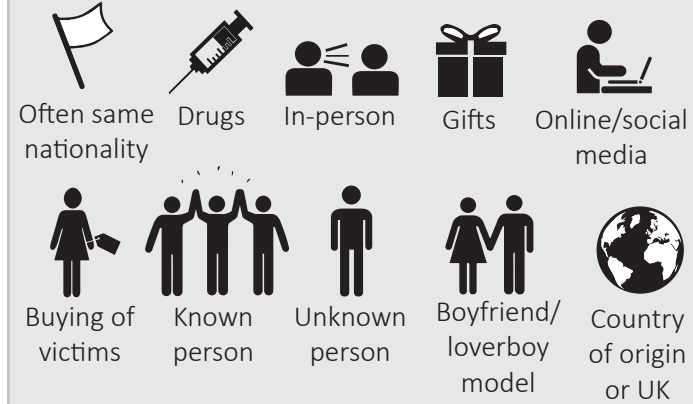


## VICTIM VULNERABILITIES



## RECRUITMENT

Victims may be forced, coerced or deceived into exploitation - this can be over time so that the victim does not realise they are being groomed



Depending on the size and level of organisation, offenders may have specific roles

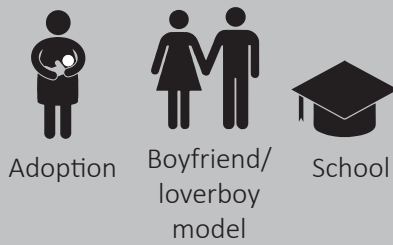


## COERCION & CONTROL

Coercion may continue throughout exploitation as a method of control - explaining why victims remain in exploitative situations



## DECEPTION



Victims may be misled about a job's nature, existence or legality

Victims may travel to the UK with different expectations



Victims may be misled about their hours, wages, or living/working conditions

## TRAVEL

Non-UK victims enter the UK legally, illegally or clandestinely. UK and non-UK victims will be moved around once in the UK  
Victims may be exploited en route



## LABOUR

Victims may work for offenders directly, or work for others



## EXPLOITATION

### CRIME

Victims are forced or coerced into criminal activities (e.g. begging, shoplifting, forced marriage)



### SEXUAL

Victims can be forced, or appear willing to work in the sex industry, in a variety of locations



### DOMESTIC SERVITUDE

Victims are forced to carry out household tasks - movement is likely to be restricted



5| The alpha victim is complicit in exploitation of others - their conditions may improve despite remaining a victim

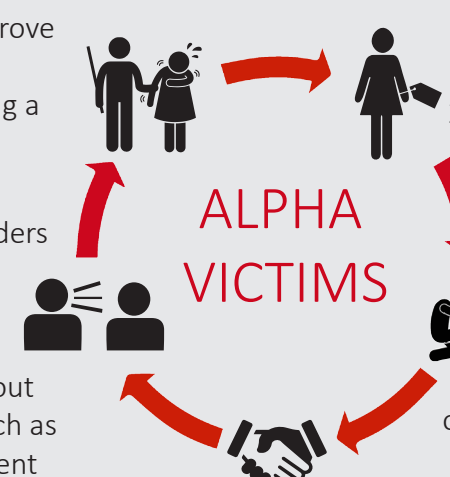
1| Victim is recruited and exploited for the purpose of Modern Slavery

4| Offenders force or groom victims to carry out tasks, such as recruitment or control, towards other victims

## ALPHA VICTIMS

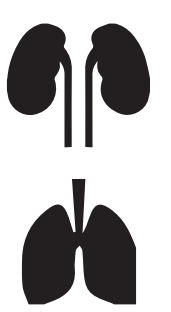
3| Offenders have increased trust in victim and allow them responsibility

2| Relationship is built between offenders and victims - this may be based on dependence



## ORGAN HARVESTING

Victim's organs, blood or eggs may be taken to be sold (not yet identified in the UK)



## MONEY

Offenders charge victims for everyday items, to maximise their profits and build a debt to increase control over victims



## SIGNS OF EXPLOITATION



Modern Slavery Helpline  
08000 121 700

Local Contact:

